

PACKAGE DIMENSION

◇ **Package Dimensions of Device**

UNIT: mm

◇ **Tape Specification: 3,000pcs per reel**

Packing Size													
Item	W	P1	E	F	D	D1	Po	10Po	P2	Ao	Bo	Ko	t
Spec.	8.00	4.00	1.75	3.50	1.5	1.0	4.00	40.00	2.00	1.42	2.24	1.04	0.254
Tolerance	±0.20	±0.10	±0.10	±0.05	+0.1	+0.25	±0.1	±0.20	±0.05	±0.10	±0.10	±0.10	±0.02

◇ **Package Dimensions of Reel**

◇ **Recommended Soldering Pad Dimensions**

NOTES:

- All dimensions are in millimeter(inch);
- Tolerance is ±0.1mm(0.004") especially other specified;
- Specifications are subject to change without notice.

SE-0805T-YGC

✧ **Features:**

- **Dice Material:** GaP
- **Light Color:** Yellow Green
- **Lens Color:** Water Clear
- Package in 8mm tape on 7" diameter reel
- Compatible with automatic placement equipment
- Compatible with reflow solder process

✧ **Applications:**

- Automotive: backlighting in dashboard switch
- Indicators
- LCD Back-lights
- Illuminations

✧ **Absolute Maximum Ratings(Ta=25°C°)**

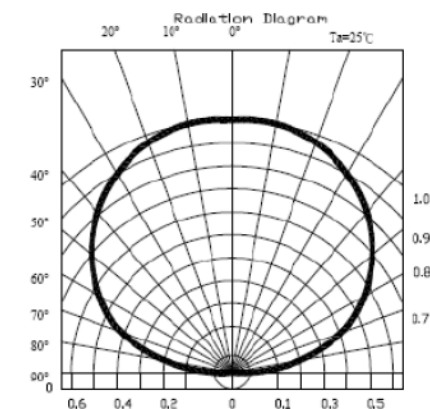
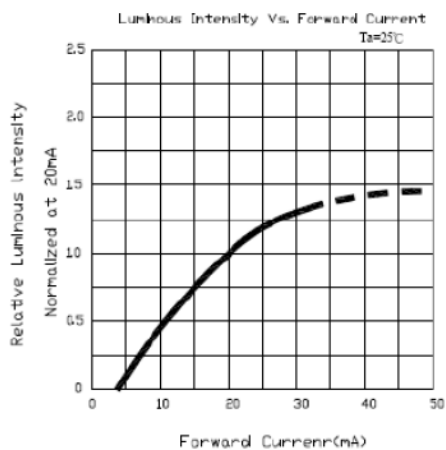
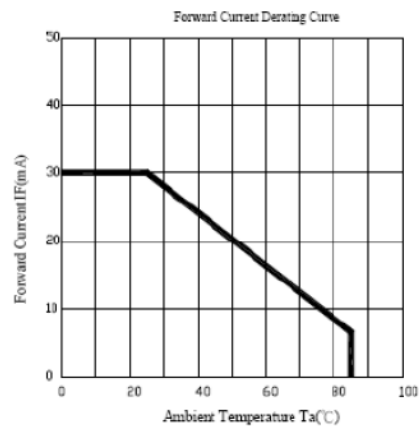
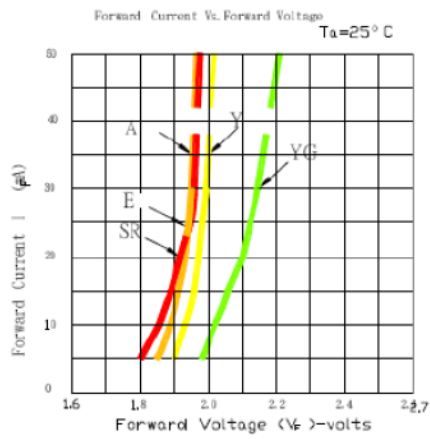
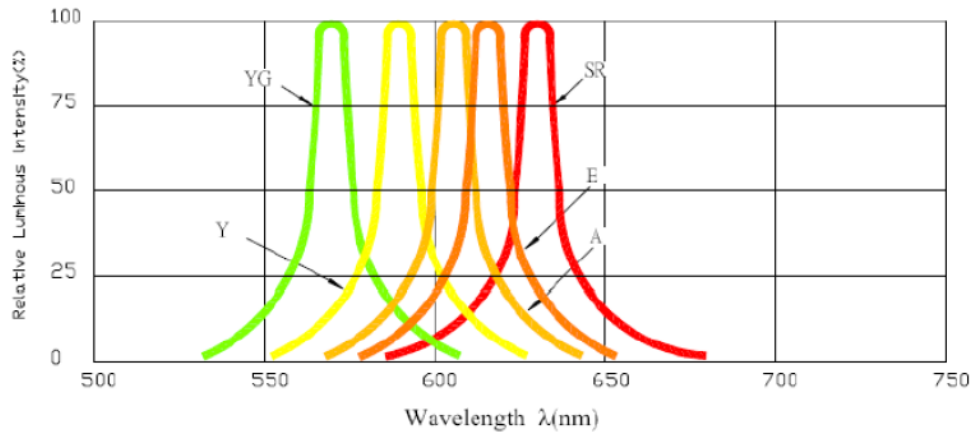
Item	Symbol	Maximum	Unit
Power Dissipation	PD	78	mW
Continuous Forward Current	IFmax	30	mA
Peak Forward Current (1/10 Duty Cycle 0.1ms Pulse Width)	IFP	100	mA
Reverse Voltage	VR	5	V
Derating Linear From 25°C		0.3	mA / °C
Operating Temperature Range	Topr	-30 to +80	°C
Storage Temperature Range	Tstg	-40 to +90	°C

✧ **Electrical / Optical Characteristics(Ta=25°C°)**

Item	Symbol	Condition	Min.	Typ.	Max.	Unit
Forward Voltage	VF	IF=20mA	--	2.20	2.60	V
Luminous Intensity	IV	IF=20mA	5.0	12.0	--	mcd
Peak Emission Wavelength	λP	IF=20mA	--	568	--	nm
Dominant Wavelength	λD	IF=20mA	568	573	578	nm
Viewing Angle	2θ½	IF=20mA	--	130	--	deg
Reverse Current	IR	VR=5V	--	--	10	uA

The measuring tolerance: Luminous intensity ±15%; Wavelength(λD) ±2nm

✦ Typical Electro-Optical Characteristics Curves



SE-0805T-YGC

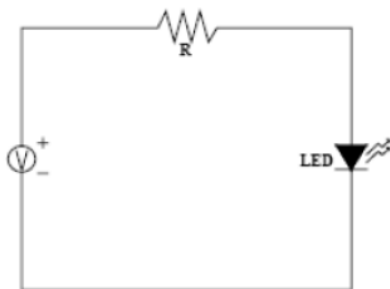
❖ **Descriptions**

- The Chip-LED Taping is much smaller than lead frame type components. Thus enable smaller board size, higher density, reduced storage space and finally smaller equipment to be obtained.
- Besides, lightweight makes them ideal for miniature application, etc.

❖ **Reliability Test Items And Conditions**

NO.	Item	Test Condition	Test Hr/cycle/time	Sample Q"ty
1	Solder Heat	TEMP:260°C±5°C	5sec	48pcs
2	Temperature Cycle	90°C~25°C~30°C~25°C 30m 5m 30m 5m	300 cycles	48pcs
3	Thermal Shock	100°C~55°C 10m 10m	100 cycles	48pcs
4	Operating Life	IF=20mA	1000 hrs	48pcs
5	High Temperature Storage	TEMP: +90°C	1000 hrs	48pcs
6	Low Temperature Storage	TEMP: -30°C	1000 hrs	48pcs
7	80°C	1000 hrs	48pcs	
8	High Humidity	80%R.H.	1000 hrs	48pcs

❖ **Test Circuit**



◇ **Precautions For Use**

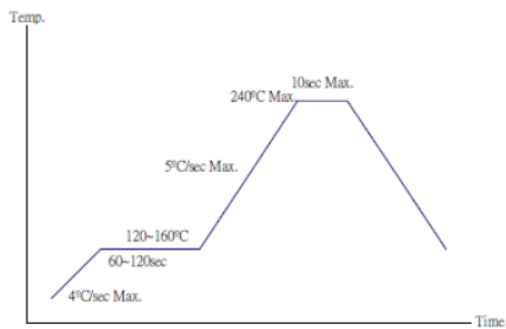
➤ **Overdrive current proof**

Customer must apply resistors for protection; otherwise slight voltage shift will cause current change with great deal. (Burn out will happen)

➤ **Storage**

- The operation of temperature and R.H. are: 5°C ~30°C, 60%R.H> Max.
- Once the packing is opened, the products should be used within a week. Otherwise, they should be kept in a damp-proof box with desiccant. Considering the tape life, we suggest our customers to use our products within 1.5 year (from production date).
- It's recommended to bake before soldering when the package is unsealed more than 72hrs. The condition is: 60°C±5°C for 15hrs.

◇ **Reflow Temp. / Time**



◇ **Hand Soldering Iron**

- Temperature at tip of iron: 400°C Max. (35W Max.)
- Soldering time: 3±1sec

◇ **Soldering Heat Reliability**

- Please refer to the following figure:

