

### PACKAGE DIMENSION

◇ **Package Dimensions of Device**

UNIT: mm

◇ **Tape Specification: 3,000pcs per reel**

Packing Size													
Item	W	P1	E	F	D	D1	Po	10Po	P2	Ao	Bo	Ko	t
Spec.	8.00	4.00	1.75	3.50	1.5	1.0	4.00	40.00	2.00	1.42	2.24	1.04	0.254
Tolerance	±0.20	±0.10	±0.10	±0.05	+0.1	+0.25	±0.1	±0.20	±0.05	±0.10	±0.10	±0.10	±0.02

◇ **Package Dimensions of Reel**

◇ **Recommended Soldering Pad Dimensions**

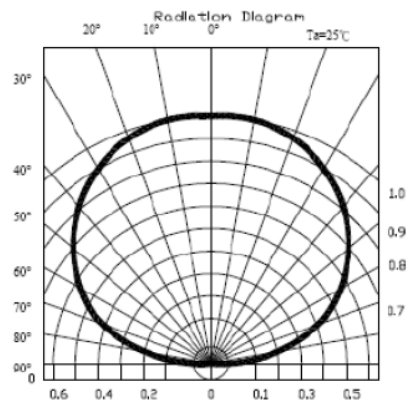
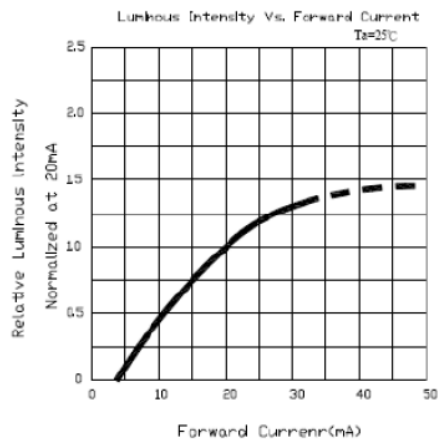
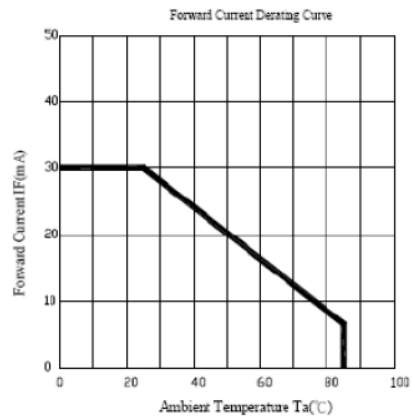
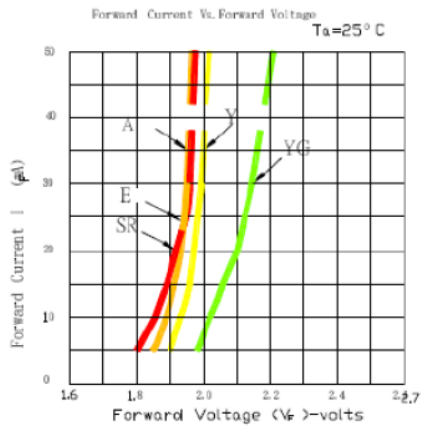
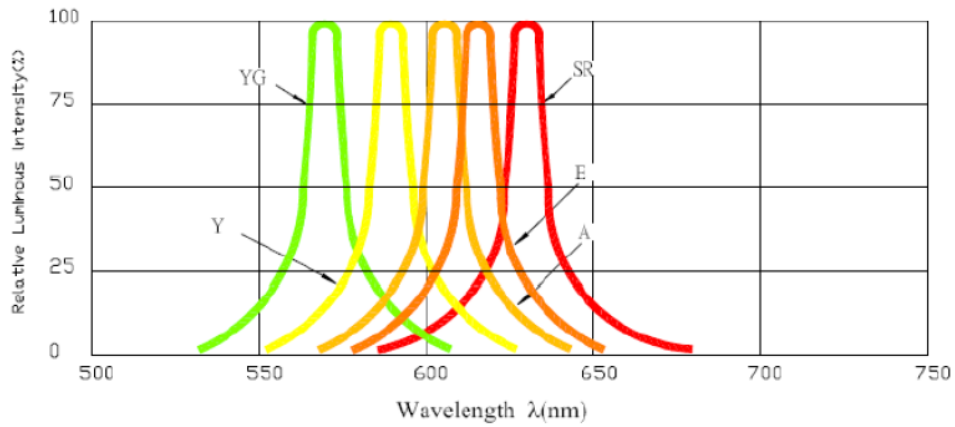
**NOTES:**

- All dimensions are in millimeter(inch);
- Tolerance is ±0.1mm(0.004") especially other specified;
- Specifications are subject to change without notice.

SE-0805T-SRC

<p>✧ <b>Features:</b></p> <ul style="list-style-type: none"> <li>➤ Dice Material: AlGaInP</li> <li>➤ Light Color: Super Bright Red</li> <li>➤ Lens Color: Water Clear</li> <li>➤ Package in 8mm tape on 7" diameter reel</li> <li>➤ Compatible with automatic placement equipment</li> <li>➤ Compatible with reflow solder process</li> </ul>	<p>✧ <b>Applications:</b></p> <ul style="list-style-type: none"> <li>➤ Automotive: backlighting in dashboard switch</li> <li>➤ Indicators</li> <li>➤ LCD Back-lights</li> <li>➤ Illuminations</li> </ul>																																																	
<p>✧ <b>Absolute Maximum Ratings(Ta=25°C°)</b></p> <table border="1"> <thead> <tr> <th>Item</th> <th>Symbol</th> <th>Maximum</th> <th>Unit</th> </tr> </thead> <tbody> <tr> <td>Power Dissipation</td> <td>PD</td> <td>78</td> <td>mW</td> </tr> <tr> <td>Continuous Forward Current</td> <td>IFmax</td> <td>30</td> <td>mA</td> </tr> <tr> <td>Peak Forward Current (1/10 Duty Cycle 0.1ms Pulse Width)</td> <td>IFP</td> <td>100</td> <td>mA</td> </tr> <tr> <td>Reverse Voltage</td> <td>VR</td> <td>5</td> <td>V</td> </tr> <tr> <td>Derating Linear From 25°C</td> <td></td> <td>0.3</td> <td>mA / °C</td> </tr> <tr> <td>Operating Temperature Range</td> <td>Topr</td> <td>-30 to +80</td> <td>°C</td> </tr> <tr> <td>Storage Temperature Range</td> <td>Tstg</td> <td>-40 to +90</td> <td>°C</td> </tr> </tbody> </table>		Item	Symbol	Maximum	Unit	Power Dissipation	PD	78	mW	Continuous Forward Current	IFmax	30	mA	Peak Forward Current (1/10 Duty Cycle 0.1ms Pulse Width)	IFP	100	mA	Reverse Voltage	VR	5	V	Derating Linear From 25°C		0.3	mA / °C	Operating Temperature Range	Topr	-30 to +80	°C	Storage Temperature Range	Tstg	-40 to +90	°C																	
Item	Symbol	Maximum	Unit																																															
Power Dissipation	PD	78	mW																																															
Continuous Forward Current	IFmax	30	mA																																															
Peak Forward Current (1/10 Duty Cycle 0.1ms Pulse Width)	IFP	100	mA																																															
Reverse Voltage	VR	5	V																																															
Derating Linear From 25°C		0.3	mA / °C																																															
Operating Temperature Range	Topr	-30 to +80	°C																																															
Storage Temperature Range	Tstg	-40 to +90	°C																																															
<p>✧ <b>Electrical / Optical Characteristics(Ta=25°C°)</b></p> <table border="1"> <thead> <tr> <th>Item</th> <th>Symbol</th> <th>Condition</th> <th>Min.</th> <th>Typ.</th> <th>Max.</th> <th>Unit</th> </tr> </thead> <tbody> <tr> <td>Forward Voltage</td> <td>VF</td> <td>IF=20mA</td> <td>1.80</td> <td>2.00</td> <td>2.40</td> <td>V</td> </tr> <tr> <td>Luminous Intensity</td> <td>Iv</td> <td>IF=20mA</td> <td>28.0</td> <td>40.0</td> <td>--</td> <td>mcd</td> </tr> <tr> <td>Peak Emission Wavelength</td> <td>λP</td> <td>IF=20mA</td> <td>--</td> <td>630</td> <td>--</td> <td>nm</td> </tr> <tr> <td>Dominant Wavelength</td> <td>λD</td> <td>IF=20mA</td> <td>625</td> <td>630</td> <td>635</td> <td>nm</td> </tr> <tr> <td>Viewing Angle</td> <td>2θ½</td> <td>IF=20mA</td> <td>--</td> <td>130</td> <td>--</td> <td>deg</td> </tr> <tr> <td>Reverse Current</td> <td>IR</td> <td>VR=5V</td> <td>--</td> <td>--</td> <td>10</td> <td>uA</td> </tr> </tbody> </table> <p><b>The measuring tolerance: Luminous intensity ±15%; Wavelength(λD) ±2nm</b></p>		Item	Symbol	Condition	Min.	Typ.	Max.	Unit	Forward Voltage	VF	IF=20mA	1.80	2.00	2.40	V	Luminous Intensity	Iv	IF=20mA	28.0	40.0	--	mcd	Peak Emission Wavelength	λP	IF=20mA	--	630	--	nm	Dominant Wavelength	λD	IF=20mA	625	630	635	nm	Viewing Angle	2θ½	IF=20mA	--	130	--	deg	Reverse Current	IR	VR=5V	--	--	10	uA
Item	Symbol	Condition	Min.	Typ.	Max.	Unit																																												
Forward Voltage	VF	IF=20mA	1.80	2.00	2.40	V																																												
Luminous Intensity	Iv	IF=20mA	28.0	40.0	--	mcd																																												
Peak Emission Wavelength	λP	IF=20mA	--	630	--	nm																																												
Dominant Wavelength	λD	IF=20mA	625	630	635	nm																																												
Viewing Angle	2θ½	IF=20mA	--	130	--	deg																																												
Reverse Current	IR	VR=5V	--	--	10	uA																																												

◆ Typical Electro-Optical Characteristics Curves



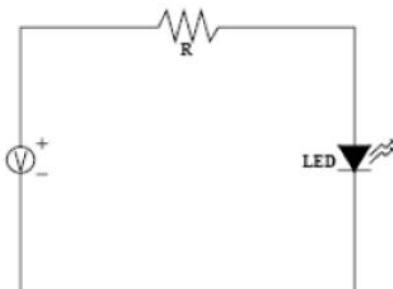
◇ **Descriptions**

- The Chip-LED Taping is much smaller than lead frame type components. Thus enable smaller board size, higher density, reduced storage space and finally smaller equipment to be obtained.
- Besides, lightweight makes them ideal for miniature application, etc.

◇ **Reliability Test Items And Conditions**

NO.	Item	Test Condition	Test Hr/cycle/time	Sample Q'ty
1	Solder Heat	TEMP:260°C±5°C	5sec	48pcs
2	Temperature Cycle	90°C~25°C~30°C~25°C 30m 5m 30m 5m	300 cycles	48pcs
3	Thermal Shock	100°C~55°C 10m 10m	100 cycles	48pcs
4	Operating Life	IF=20mA	1000 hrs	48pcs
5	High Temperature Storage	TEMP: +90°C	1000 hrs	48pcs
6	Low Temperature Storage	TEMP: -30°C	1000 hrs	48pcs
7	High Temperature	80°C	1000 hrs	48pcs
8	High Humidity	80%R.H.	1000 hrs	48pcs

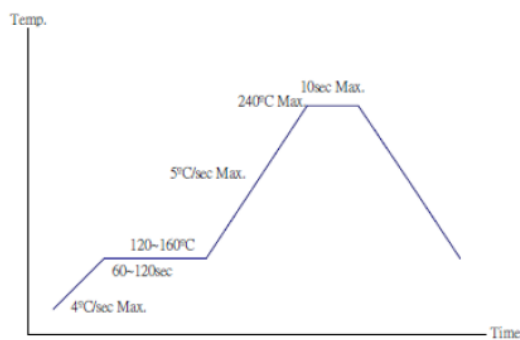
◇ **Test Circuit**



❖ **Precautions For Use**

- **Overdrive current proof**  
Customer must apply resistors for protection; otherwise slight voltage shift will cause current change with great deal. (Burn out will happen)
- **Storage**
  - The operation of temperature and R.H. are: 5°C ~30°C, 60%R.H> Max.
  - Once the packing is opened, the products should be used within a week. Otherwise, they should be kept in a damp-proof box with desiccant. Considering the tape life, we suggest our customers to use our products within 1.5 year (from production date).
  - It's recommended to bake before soldering when the package is unsealed more than 72hrs. The condition is: 60°C±5°C for 15hrs.

❖ **Reflow Temp. / Time**



❖ **Hand Soldering Iron**

- Temperature at tip of iron: 400°C Max. (35W Max.)
- Soldering time: 3±1sec

❖ **Soldering Heat Reliability**

- Please refer to the following figure:

