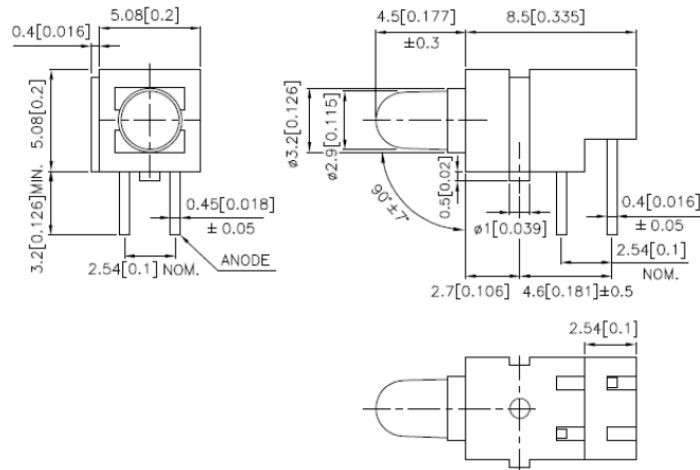


SE-182-1G-BF01



Absolute Maximum Ratings at TA=25°C

Parameter	Maximum Rating	Unit
DC Forward Current	25	mA
Power Dissipation	62,5	mW
Pulse Current (1/10 Duty Cycle, 0.1ms Pulse Width)	140	mA
Reverse Voltage(V <sub>r</sub> )	5	V
Operating Temperature Range	-40°C to + 85°C	
Storage Temperature Range	-40°C to + 85°C	
Lead Soldering Temperature	260°C for 5 Seconds	

Electrical / Optical Characteristics at TA=25°C

Parameter	Symbol	Min.	Typ.	Max.	Unit	Test Condition
Luminous Intensity	IV	8	30		mcd	IF = 20mA
Viewing Angle	2θ1/2		30		deg	IF = 20mA
Dominant Wavelength	λ <sub>d</sub>		568		nm	IF = 20mA
Forward Voltage	V <sub>F</sub>		2.2	2.5	V	IF = 20mA
Reverse Current, any Dot	I <sub>R</sub>			10	μA	VR = 5V