

## High Power LED 30 Watt

weiß



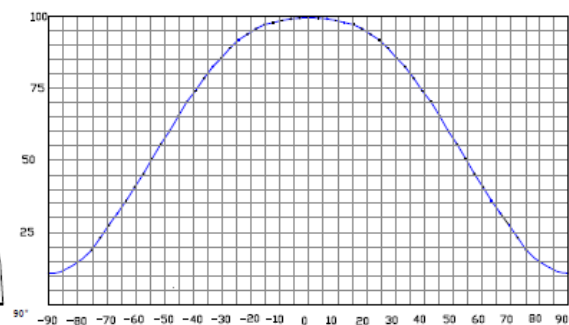
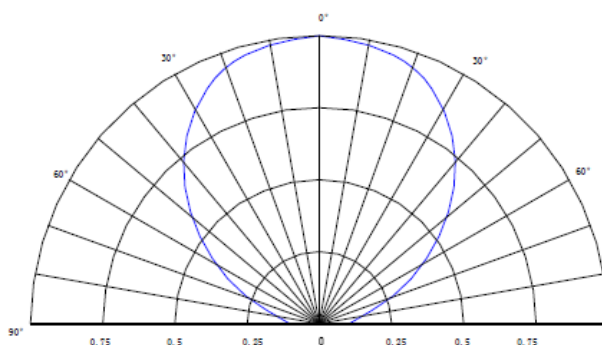
### Features

- Long operating life
- Highest flux
- Wide range of colors:2500K-25000K
- More energy efficient than incandescent and most halogen lamps
- Low voltage DC operated
- Cool beam, safe to the touch
- Instant light (less than 100ns )
- Fully dimmable
- No UV
- Superior ESD protection
- Eutectic die bonding
- RoHS compliant

### Applications

- Reading lights (car, bus, aircraft)
- LCD Backlights/light Guides
- Fiber optic alternative/ Decorative / Entertainment
- Mini-accent/Up lighters/Down lighters/ Orientation
- Indoor/Outdoor commercial and Residential Architectural
- Cove/Under shelf/Task
- Bollards/Security/Garden
- Portable (flashlight, bicycle)
- Edge-lit signs (Exit, point of sale)
- Automotive Exit (Stop-Tail-Turn,CHMSL, Mirror Side Repeat)
- Traffic signaling / Beacons / RailCrossing and Wayside

### ■ Radiation Pattern



## ■ Typical Optical/ Electrical Characteristics @T<sub>J</sub>=25°C

Item	Symbol	Condition	Min.	Typ.	Max.	Unit
Forward Voltage	V <sub>F</sub>	IF=1.4A	--	24	--	V
Reverse Current	I <sub>R</sub>	VR=5v	--	--	50	uA
50% Power Angle	2θ1/2	IF=1.4A	--	140	--	deg
Luminous Intensity	φ <sub>V</sub>	IF=1.4A	850	1000	1100	lm
Recommend Forward Current	I <sub>F</sub>	--	--	1.4	--	A
Chromaticity	T <sub>c</sub>	IF=1.4A	5000	6000	7000	k
Chromaticity Coordinates	X	IF=1.4A	--	--	--	--
	Y	IF=1.4A	--	--	--	

**Notes:** 1. Tolerance of measurement of forward voltage±0.1V.

2. Tolerance of measurement of peak Wavelength±2.0nm.

3. Tolerance of measurement of luminous intensity±15%.

## ■ Absolute Maximum Rating

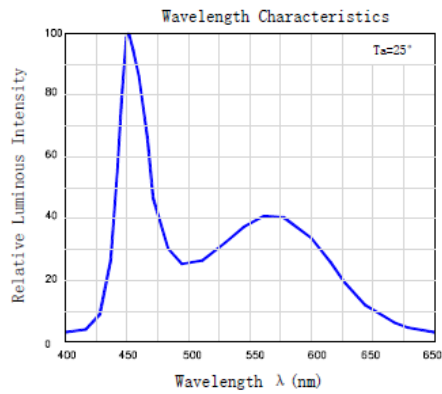
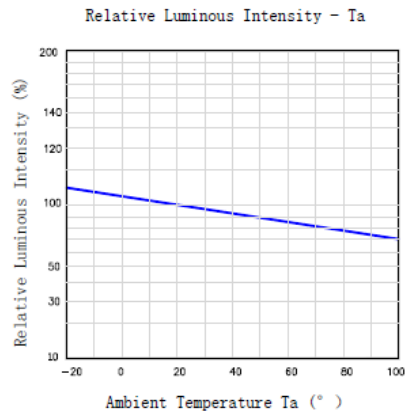
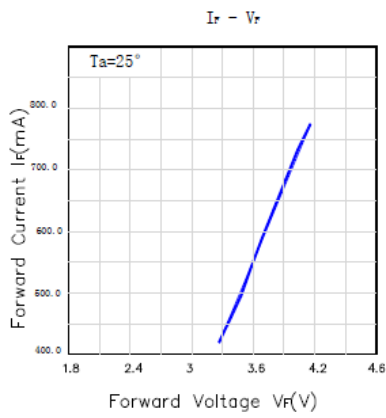
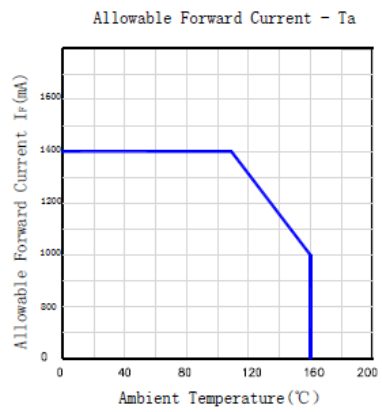
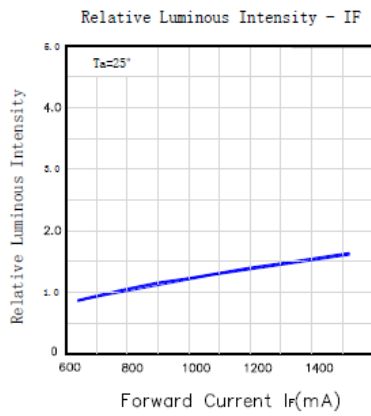
Item	Symbol	Absolute Maximum Rating	Unit
Forward Current	I <sub>F</sub>	1.4	A
Peak Forward Current*	I <sub>FP</sub>	1.6	A
Reverse Voltage	V <sub>R</sub>	5	V
Power Dissipation	P <sub>D</sub>	30	W
Electrostatic discharge	E <sub>SD</sub>	±4500	V
Operation Temperature	T <sub>OPR</sub>	-40~+80	°C
Storage Temperature	T <sub>STG</sub>	-40~+100	°C
Lead Soldering Temperature*	T <sub>SOL</sub>	Max. 260°C for 6sec Max.	

\*IFP Conditions: Pulse Width≤10msec duty≤1/10

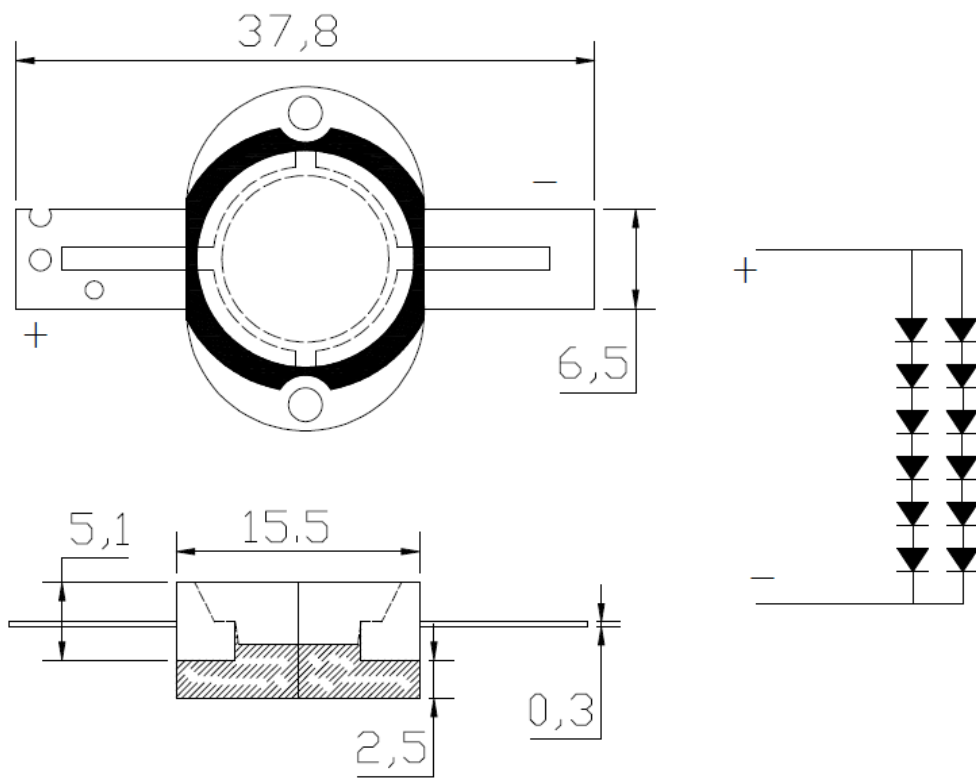
\* All high power emitter LED products mounted on aluminum metal-core printed circuit board, can be lighted directly, but we do not recommend lighting the high power products for more than 5 seconds without a appropriate heat dissipation equipment.

## ■ Typical Optical/Electrical Characteristics Curves

( $T_J=25^{\circ}\text{C}$  Unless Otherwise Noted )



## Package Dimensions



### Notes:

1. All dimension units are millimeters.
2. All dimension tolerance is  $\pm 0.2\text{mm}$  unless otherwise noted.