

High Power LED 10 Watt

weiß



Features

1. Long operating life
2. Highest flux
3. Wide range of colors: 2500K~25000K
4. More energy efficient than incandescent and most halogen lamps
5. Low voltage DC operated
6. Cool beam, safe to touch
7. Instant light (less than 100ns)
8. Fully dimmable
9. No UV
10. Superior ESD protection
11. Eutectic die bonding
12. RoHS compliant

Applications

1. Reading lights (cars, buses & aircraft)
2. LCD Backlights/light Guides
3. Fiber optic alternative / Decorative / Entertainment
4. Mini-accent / Up lighters / Down lighters / Orientation
5. Indoor / Outdoor commercial and Residential Architectural
6. Cove / Under shelf / Task
7. Bollards / Security / Garden
8. Portable (flashlight, bicycle)
9. Edge-lit signs (Exit, point of sale)
10. Automotive Exit (Stop-Tail-Turn, CHMSL, Mirror Side Repeat)
11. Traffic signaling / Beacons / Rail Crossing and Wayside

Absolute Maximum Ratings(Ta=25C°)

Item	Symbol	Maximum	Unit
Forward Current	IF	1.4	A
Peak Forward Current*	IFP	1.5	A
Reverse Voltage	VR	5	V
Power Dissipation	PD	10	W
Electrostatic Discharge	ESD	±4500	V
Operating Temperature Range	TOPR	-40 ~ +80	°C
Storage Temperature Range	TSTG	-40 ~ +100	°C
Lead Soldering Temperature**	TsOL	Max. 260°C for 6sec Max.	

*IFP Conditions: Pulse Width≤10msec duty≤1/10

**All high power emitter LED products mounted on aluminum metal-core PCB, can be lighted directly, but we do not recommend lighting the high power products for more than 5 seconds without a appropriate heat dissipation equipment.

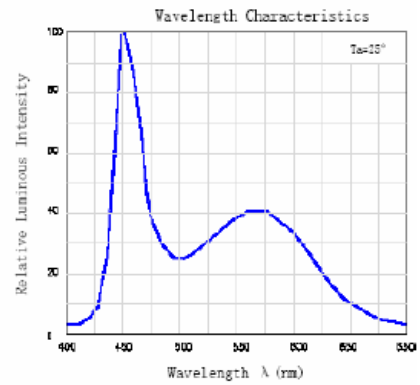
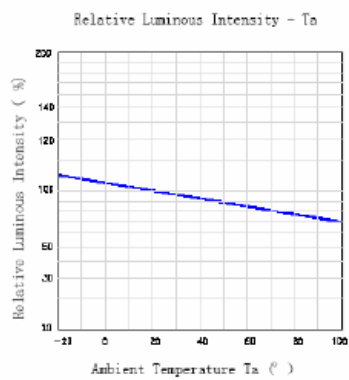
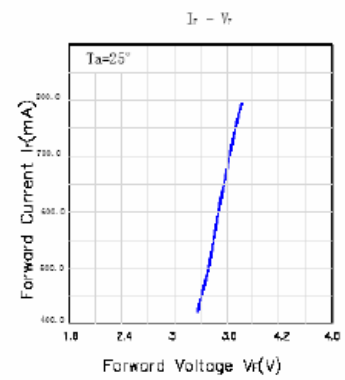
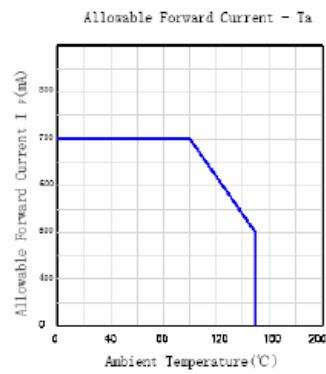
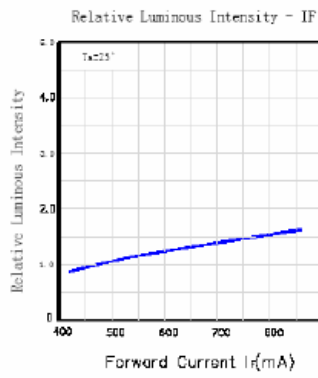
Electrical / Optical Characteristics(Ta=25C°)

Item	Symbol	Min.	Typ.	Max.	Unit	Condition
Forward Voltage	VF	--	10	--	V	IF=1.4A
Reverse Current	IR	--	--	50	uA	VR=5V
50% Power Angle	2θ½	--	140	--	deg	IF=1.4A
Luminous Intensity	Φv	300	350	450	lm	IF=1.4A
Recommend Forward Current	IF	--	1.4	--	A	--
Chromaticity	Tc	5000	6000	7000	K	IF=1.4A
White Color Region	--	--	--	--	--	IF=1.4A
Chromaticity Coordinates	--	--	--	--	--	IF=1.4A

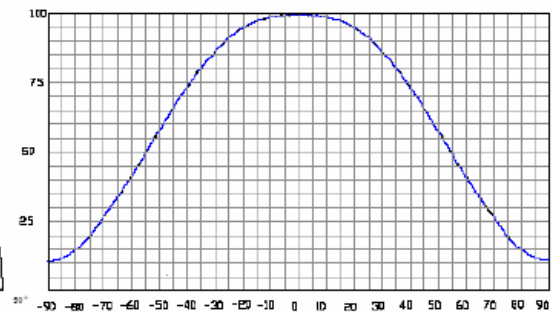
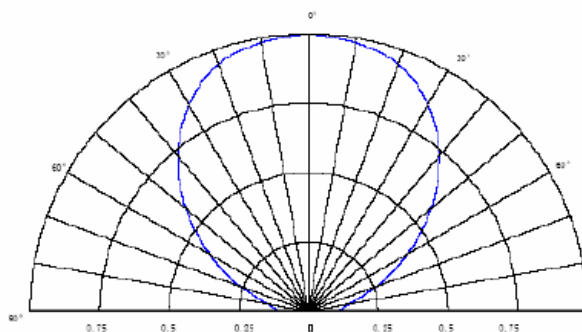
Notes:

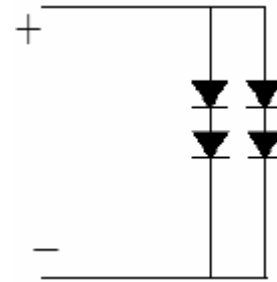
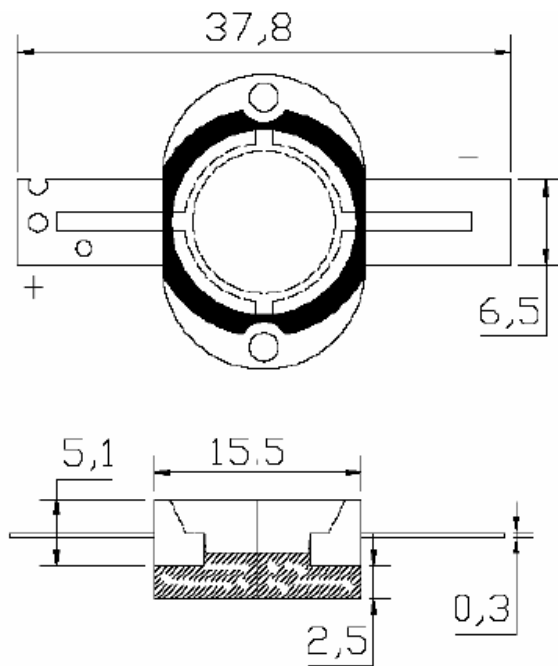
1. Torlerance of measurement of fowward voltage ±0.1V.
2. Torlerance of measurement of peak wavelength ±2.0nm.
3. Torlerance of measurement of luminous intensity ±15%.

Typical Electrical / Optical Characteristics Curves (Ta=25C°)



Radiation Pattern





NOTES:

1. All dimensions are in millimeters;
2. Tolerance is $\pm 0.20\text{mm}$ especially other specified.